



ANZ National Coaching Program

Update History

Vers	Name	Date	Section and update summary
1.1	Scott Collett	2013/03/01	1.2 Point 1 added and reorder of points.
1.2	Andrew Russell	2013/04/29	Major Update for Coach Accreditation and Re-Accreditation
1.3	Andrew Russell	2013/08/12	Minor amendments for on-going panel decisions
1.4	Andrew Russell	2014/09/23	Published copy for membership
1.5	Andrew Russell	2014/11/22	Updated following Coaching Workshop
1.6	Andrew Russell	2016/09/26	General Update
1.7	Andrew Russell	2017/03/18	General Update
1.8	Andrew Russell	2019/02/06	Update for ANZ Restructure and removing reaccreditation for ANZ members

ArcheryNZ National Coaching Program

1. National Coaching Program Policy Statement	3
1.1. Mission Statement	3
1.2. ANZ National Coaching Program Goals	3
2. Archery New Zealand National Coaching Program.....	4
2.1. Purpose	4
2.2. Archery New Zealand Coaching Governance.....	4
3. Coach Accreditation	5
3.1. ANZ Coach Framework	5
3.2. Attendance Criteria	7
3.3. Course Instructors	8
3.4. Manuals and Handouts	8
3.5. Fees.....	8
3.6. Coaching Registration	9
3.7. Prior Learning Including Overseas Coaches	9
3.8. Code of Ethics	10
4. Coach Development	10
4.1. Overview	10
4.2. Coach Reaccreditation.....	10
4.3. Regional Seminars.....	11
5. High Performance.....	11
5.1. Overview	11
5.2. High Performance Coordinator	11
5.3. High Performance Squad	11

1. National Coaching Program Policy Statement

1.1.Mission Statement

The Archery NZ Coaching programme will provide world class coaching capability to meet archers' needs and support them in achieving their goals and aspirations, from beginner level through to International and Olympic Archery.

1.2.ANZ National Coaching Program Goals

The goals of the ANZ National Coaching Program are to:

- Improve the quality and availability of athlete-focused coaching.
- Maintain a national register of coaches to enable improved communications, and to enable archers to better access coaches in their regions.
- Foster a process of coach development to enable coaches to improve their skills, including coaching seminars to be hosted annually in each district.
- Recognise and acknowledge coaches' actions and achievements, including recognition of gaining qualifications, and the "Coach of the Year" award.
- Develop and provide coach accreditation qualifications.
- Coordinate a minimum of one Foundation/Development Coach training course per year in each district, and one Performance training course every two years in each district.
- To increase the number of certified coaches to the following:
 - One Development coach per club
 - Six Performance coaches per district
 - Two High Performance coaches per district (TBC after HP Coach accreditation pathway confirmed)
- Regularly review accreditation courses, with a view to maintaining best practice coaching skills, and providing our coaches access to the best materials available.
- Develop a High Performance structure to support NZ's elite athletes in achieving excellence internationally.

2. Archery New Zealand National Coaching Program

2.1.Purpose

This document serves to detail the way in which the Archery New Zealand National Coaching Program is operated. It contains definitions of the structure and processes which underpin the ANZ Coaching Commission.

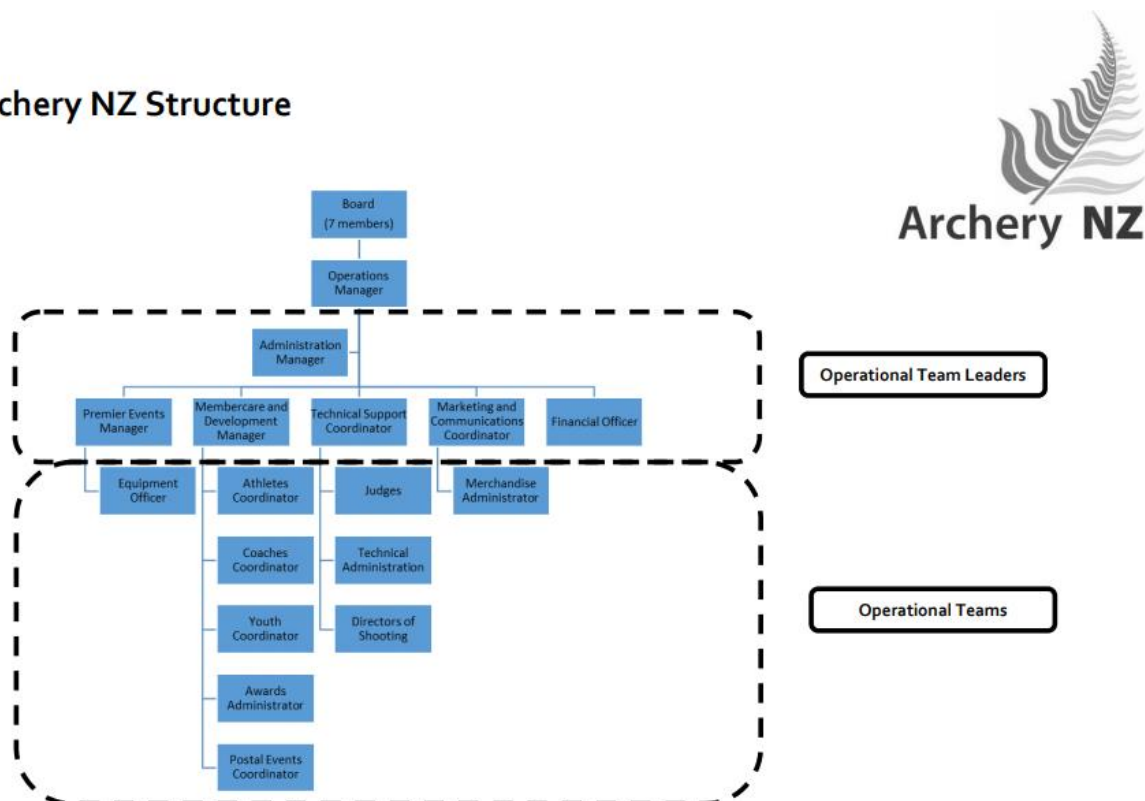
It is intended that this document contains all key information for the Coaching Commission such that it acts as a single reference document, and should be updated regularly with changes and improvements – a live document.

2.2.Archery New Zealand Coaching Governance

The ANZ Coaching Commission consists of all members of ANZ who have qualified as Foundation, Development, Performance or High-Performance Coaches and remain current. Note that non-ANZ members who undertake the Foundation Coach course do not become members of the Commission.

The following diagram shows the ArcheryNZ structure, with the Coaches Coordinator reporting to the Membercare and Development Manager:

Archery NZ Structure



Coaches Coordinator

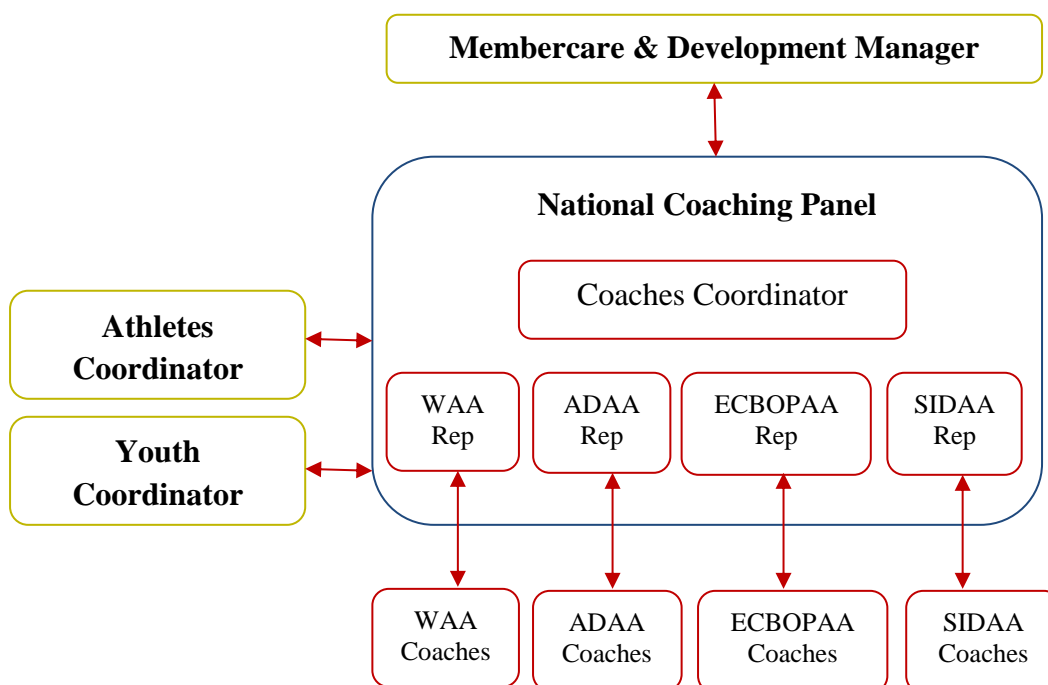
ArcheryNZ National Coaching Program

The Coaches Coordinator is elected for two-year terms (term starts in odd years) by the ANZ Coaches Commission meeting, held at the ANZ National Outdoor Championships. The Coaches Coordinator chairs panel meetings, the annual Coaches Commission meeting, and acts as the representative of the Coaching Panel in interactions with the Membercare and Development Officer and other ArcheryNZ commissions/positions.

Coaching Panel

The Coaching Commission is managed by the Coaching Panel, which is responsible for day-to-day operations and decisions. In addition to the Coordinator, four Coaching Panel members are elected by each district organisation (ADAA, ECBOPAA, WAA, SIDAA). The District Coach Representatives are responsible for communicating with the coaches in their Districts. The Panel is to communicate directly with the key stakeholders in ANZ.

The following diagram shows the structure of the coaching panel:



Regional Squads

Performance archery shall be driven from within the regions, and the Coaches Commission recognises and encourages the district squads which have been formed to develop the level of Performance archery within the regions.

3. Coach Accreditation

3.1.ANZ Coach Framework

The Coaches Commission has reviewed the SportNZ plan for developing coaches, and opted to align the coach development pathway as recommended. The focus on catering for athlete needs will drive a continual improvement on how coaching is delivered to our archers.

Sport NZ identifies the following athlete development pathway:

- Explore
- Learn
- Participate
- Perform
- Excel

The ANZ Coach Framework has been developed to cater for these athlete areas, as per Figure 1 below.

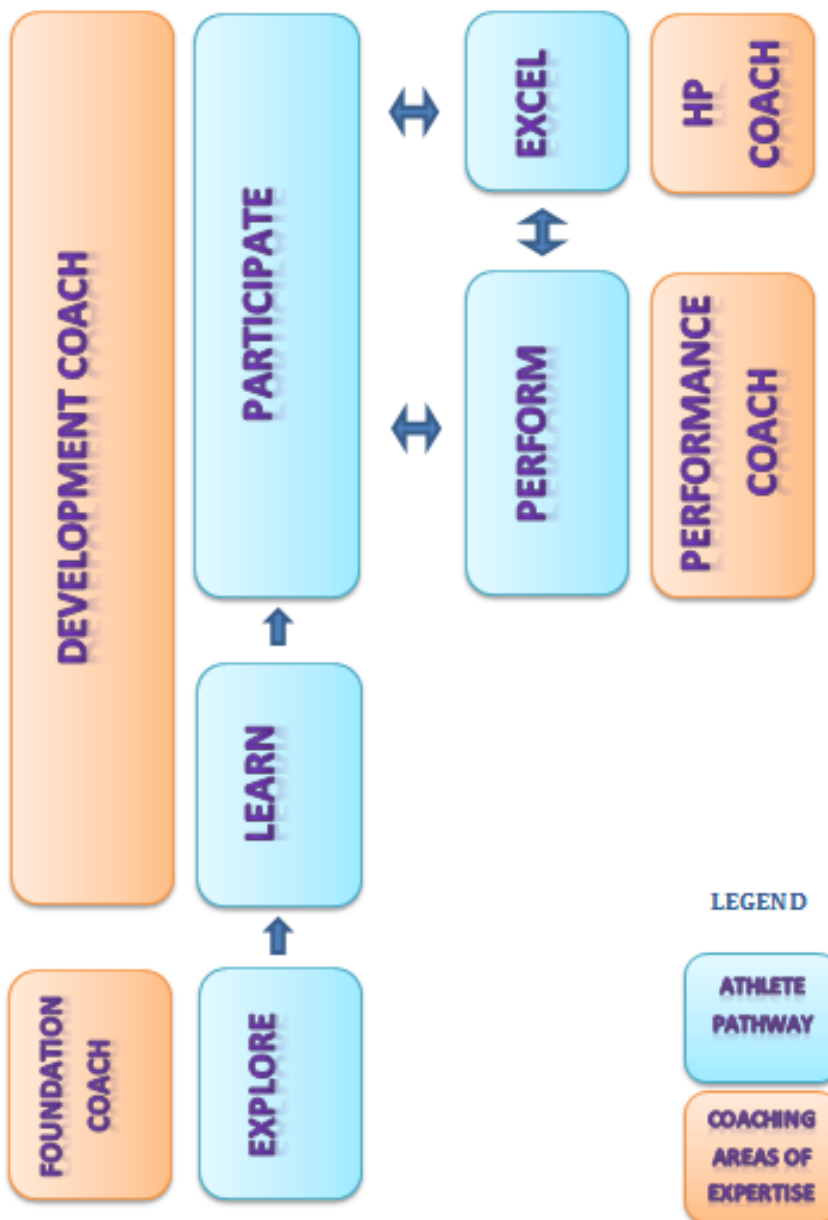


Figure 1: ANZ Coaching Framework

ArcheryNZ National Coaching Program

An athlete-oriented structure means that coaches can be experts in their field, rather than the previous system which worked in levels of coaching knowledge.

Foundation Coach

The Foundation Coach works with archers in the “Explore” phase, i.e. have-a-go experiences. This coaching qualification will be offered to ANZ members, but will primarily be focused on external parties, such as instructors running school camps, etc.

Development Coach

The Development Coaches work with archers from beginners all the way to shooting tournaments. These coaches are the heart of club coaching and will undertake the majority of grass-roots coaching around the country. The Development Coach qualification also includes the Foundation Coach course material.

Performance Coach

The Performance Coaches work with the archers in their District who are targeting national and international competitions. It is intended that Performance Coaches are involved in talent identification for their district, and to be involved in running athlete training camps within the regions.

High Performance Coach (Criteria not yet set)

The High Performance Coaches will work with the country’s top athletes, targeting success at international competitions. They will be involved in carrying out the high performance programme, and working with the High Performance Manager to further improve the HP programme.

Member Protection Policy

Prospective coaches who intend to act in an official capacity for ArcheryNZ (as appointed by ArcheryNZ or ArcheryNZ Coaching Panel) are required to sign and submit the member protection policy and return to the privacy officer if requested.

3.2.Attendance Criteria

The following attendance criteria are applicable for undertaking ANZ Coaching courses:

Coaching Course	Prerequisites
Foundation Coach	Candidates must be over the age of 16 years old. A prior knowledge of archery is not a prerequisite. Membership of ANZ is not a prerequisite. It is recommended that Foundation Coaches under 18 years’ old work with coaches who are aged over 18 years’ old.
Development Coach	Candidates must be over the age of 18 years old, members of ANZ and have at least two years’ experience in the sport of archery.*
Performance Coach	Candidates must be members of ANZ and have at least two years’ prior experience as a Development Coach*
High Performance Coach	Candidates must be members of ANZ and have at least two years’ experience as a Performance Coach.*

*See Section 3.7 for prior learning.

ArcheryNZ National Coaching Program

Membership of ArcheryNZ above shall be defined as a full, postal, social or administrative member.

3.3.Course Instructors

The Course Instructors (Tutors) must comply with the following prerequisites:

Coaching Course	Instructor's Prerequisites
Foundation Coach	Instructors must be a Development (or Performance/High Performance) Coach with a minimum of two years of active coaching experience at this level. Instructors shall be appointed by the District Representative
Development Coach	Instructors must be a Development (or Performance/High Performance) Coach with a minimum of two years of active coaching experience at this level. Instructors shall be appointed by the District Representative
Performance Coach	Instructors must be a Performance (or High-Performance) Coach with a minimum of two years of active coaching experience at this level. Instructors shall be appointed by the Coaching Panel as required.
High Performance Coach	The instructors and/or a peer review panel should be an experienced High-Performance Coach with a minimum of two years of coaching experience at this level. Instructors shall be appointed by the Coaching Panel as required.

3.4.Manuals and Handouts

Manuals and Hand-outs are developed and provided by the ANZ Coaching Panel, and shall be made available to Course Instructors electronically. It is the course instructors' responsibility to provide manuals for each candidate (either electronic or hard-copy).

Foundation, Development and Performance Coach materials will be made public, to encourage greater information sharing. High Performance material, once developed, will only be available to those undertaking the courses. This protects our intellectual property for high performance coaching elements.

3.5.Fees

Course fees are set by the Course Instructor. Unless funding is secured to run Coach Training Courses, all courses will run on a user-pays system to fund the following (if required):

- Venue hire
- Materials including printing
- Instructor transport and accommodation
- Other costs as they arise

ArcheryNZ National Coaching Program

It is anticipated that course fees will generally be kept to a minimal level by running the course at clubs, with local instructors where possible.

In addition, the course fees will include the following costs, paid to ANZ for provision of certificates, and for maintaining a coaching register, developing and updating accreditation documentation and managing coach reaccreditation (as applicable):

Course	Cost for ANZ members	Cost for non-ANZ members
Foundation	\$10	\$30
Development	\$25	N/A
Performance	\$50	N/A
High-Performance	TBA	N/A

3.6.Coaching Registration

The Coaching Panel will maintain an ANZ Coaching Register detailing names, contact details, information and dates regarding the levels of qualification that each coach has attained. This register will be the primary means of collating contact details for communication with coaches.

There shall be a Coach Registration Form that coaches may fill out and submit to ensure that they are on the register. Under the privacy act, all coaches will be entitled to check what details are on file, and modify them as needed from time to time.

Upon completion of coach qualifications, the course instructor should liaise with their District Coaching Representative for certificates to be produced and distributed. The District Coaching Representatives are responsible for ensuring that new coaches are processed and added to the ANZ Coaching Register.

3.7.Prior Learning Including Overseas Coaches

Candidates presenting themselves for accreditation as coaches will be allowed to have their prior knowledge taken into account. This is particularly so in the case of overseas coaches and coaches who have let their accreditation lapse.

Archers who have competed at a high level internationally may be eligible to participate in the Performance Coach course without completing the Development Coach course in advance.

In order to ensure that all those certified with current ANZ accreditation have a sufficient understanding of the course material, however, we are required to ensure that coaches can demonstrate this level of competence. The following shall comprise the process for accreditation in these instances:

Course	Accreditation Steps
Foundation	<ul style="list-style-type: none">• Candidates may opt to bypass the course and undertake the examination only (30min).
Development	<ul style="list-style-type: none">• Candidates may opt to bypass the course and undertake the

ArcheryNZ National Coaching Program

	examination only (60min).
Performance	<ul style="list-style-type: none">• The candidate is to submit a coaching work record and evidence of existing qualifications for the assessor to review (if applicable).• Candidates to undertake the assessments.
High Performance	<ul style="list-style-type: none">• The candidate is to submit a coaching work record and evidence of existing qualifications (if applicable) for the assessor to review.• Candidates to undertake the assessments/peer review (TBA).

All prospective candidates should contact their District Coaching Representative. Having reviewed and approved their coaching work record (if at Performance or High Performance level), the assessor shall organise for them to be tested under the ANZ system. The Coaching Panel appoints assessors for the Performance and High Performance levels as required.

The assessor may identify through the coaching work record that the candidates need to undertake the course for that level of coaching, either in part or in full.

If a candidate fails the examination, the assessor shall identify the necessary course of action, which may include resitting the examination at a later date, or taking the course in part or in full.

Candidates may apply to the ANZ Coaching Commission Panel to undertake an interview/practical assessment in lieu of undertaking the examination, which shall be at the Panel's discretion. If granted, the Panel shall appoint a suitable assessor.

3.8.Code of Ethics

ANZ Coaches must adhere to the SportNZ Coaches' Code of Ethics. Any disputes concerning an ANZ coach breaching the Code of Ethics shall be referred to the Coaching Panel. The Coaching Panel is responsible for considering the seriousness of the actions, and may take appropriate disciplinary action, which may include censure, written warnings, or for severe transgressions, removal from the coaching register.

4. Coach Development

4.1.Overview

Continual improvement of our coaches' skills and knowledge is a key prerequisite to advancing the level of archery in NZ. District representatives should organise regional coaching seminars, at least annually.

4.2.Coach Reaccreditation

Foundation, Development, Performance and High-Performance Coaches must maintain membership of Archery New Zealand in order to remain accredited with the ANZ Coaching Commission.

Non-ArcheryNZ Foundation Coaches' accreditation will be valid until 1st July, 3 calendar years after being awarded accreditation. To reaccredit, Foundation coaches must undertake

the Foundation Coach examination (to be taken alongside candidates of another Foundation Course that is being run at a suitable time).

4.3.Regional Seminars

Regional coaching seminars are an opportunity for nearby coaches to share knowledge and teach new skills.

Regional Seminars for coaches are to be held at least annually, and organised by the district coaching representative (organisation may be delegated). It is expected that as part of continual performance development, attending coaches will generally research a topic and present it where time permits.

It is recommended that these seminars are run between May-September to avoid the NZ outdoor tournament season, which is a busy time of year. Seminars will often be run at archery clubs to keep costs down. Where costs are incurred, they shall preferably be covered by any funding available for coach development, by the District where seen fit, else split as a registration fee between attendees.

5. High Performance

The High Performance area of ANZ Coaching will be developed following the rollout of the Performance Coaching course.

5.1.Overview

To be developed

5.2.High Performance Manager

To be developed

5.3.High Performance Squad

To be developed